



DisABILITY in the Workplace

Presented by:
Dr. Tiffany Orrin



Growing Transitional Skills through the Lifespan



1

Introduction

Dr. Orrin



2

Elementary

**Lisa Roccia,
Occupational
Therapist**



3

Secondary

**Katie Korzeniowski,
Teacher
Mrs. Sha, SSII
Olivia S., Student
Mrs. Lee, Supervisor of
Food Service**

Three Domains of Post Secondary Transition



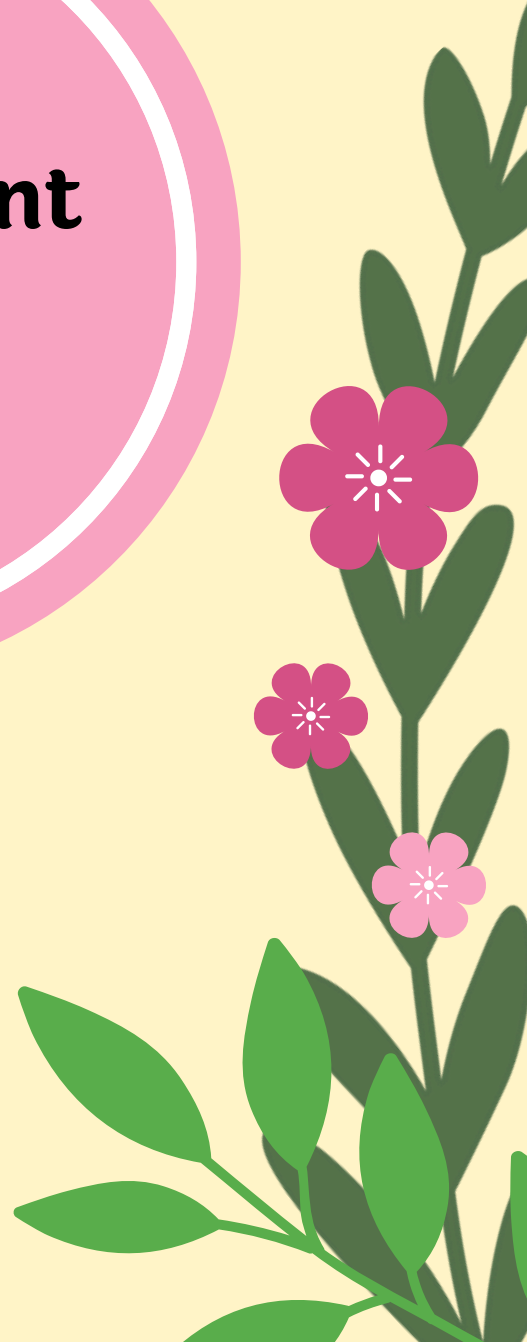
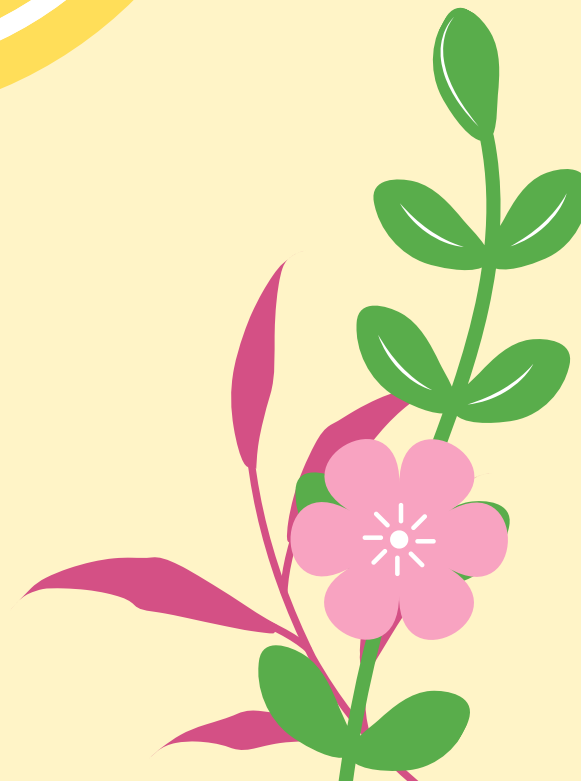
**Post
Secondary
Education**



**Post
Secondary
Employment**



**Independent
Living**



VOCATIONAL TRAINING FROM ELEMENTARY TO POST-SECONDARY



Introduction to Transition



Coffee Cart
Flower Delivery
Breakfast Delivery (Inclusive Opportunity)
Community Based Instruction



Development of Independent Skills
Communication
Personal Identify

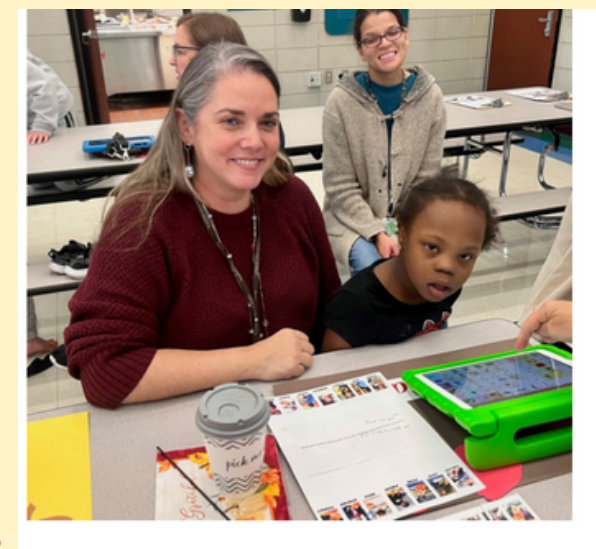
Thankful Tea



Thankful Tea



Mrs. Lisa Roccia,
Occupational Therapist



Linking Learning to Life

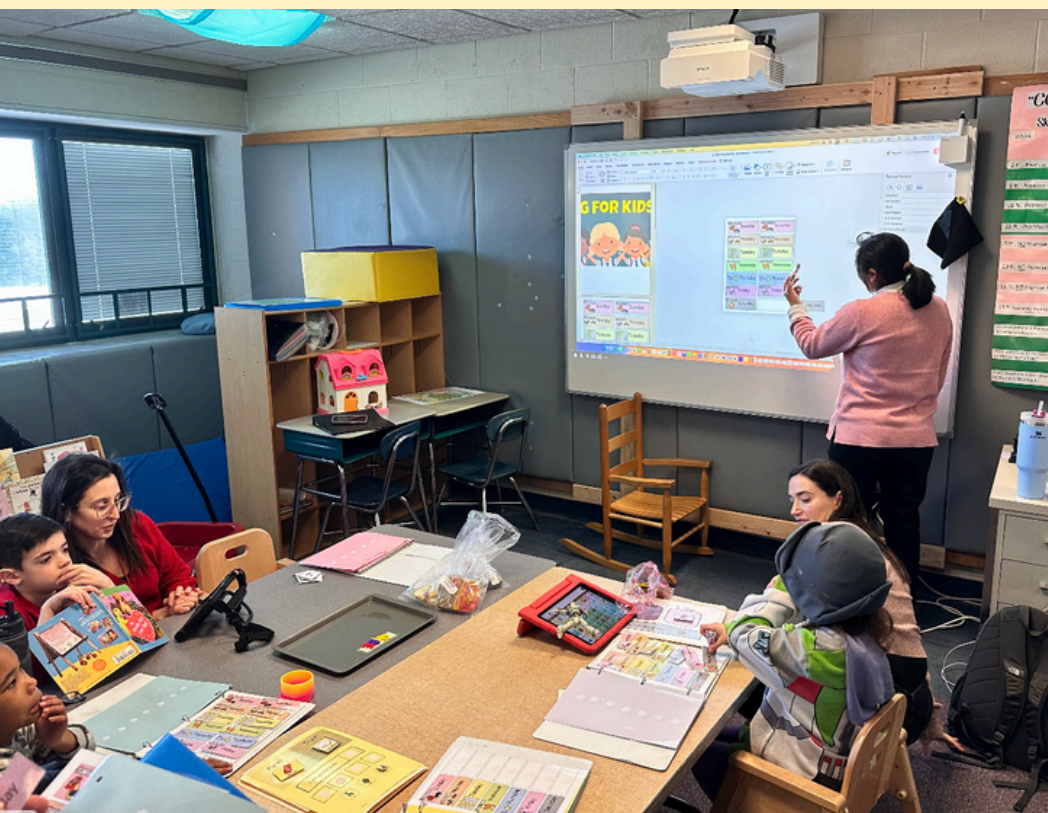
Linking learning to life, first implemented in 2015, is a two-tier secondary transition program designed to aid students in making the progression from the classroom to post-school life.

Activities are based on the individual's needs and consider his or her strengths, preferences and interests. Activities are differentiated to provide authentic opportunities to students with mild disabilities to students with more significant needs who require extensive support.



Vocational Development

Education	Education	Employment	Employment
Functional Academics	Push in Related Service	PAES	In House Jobs
Community Based Instruction	Soft Skills Course	Early Reach OVR	TOPS
Dual Enrollment	Transition Tips with Tiffany	Football Program	Community Based Work Experience & Travel Training



Job Coaching

Mrs. Korzeniewski

Mrs. Sha

Olivia S.



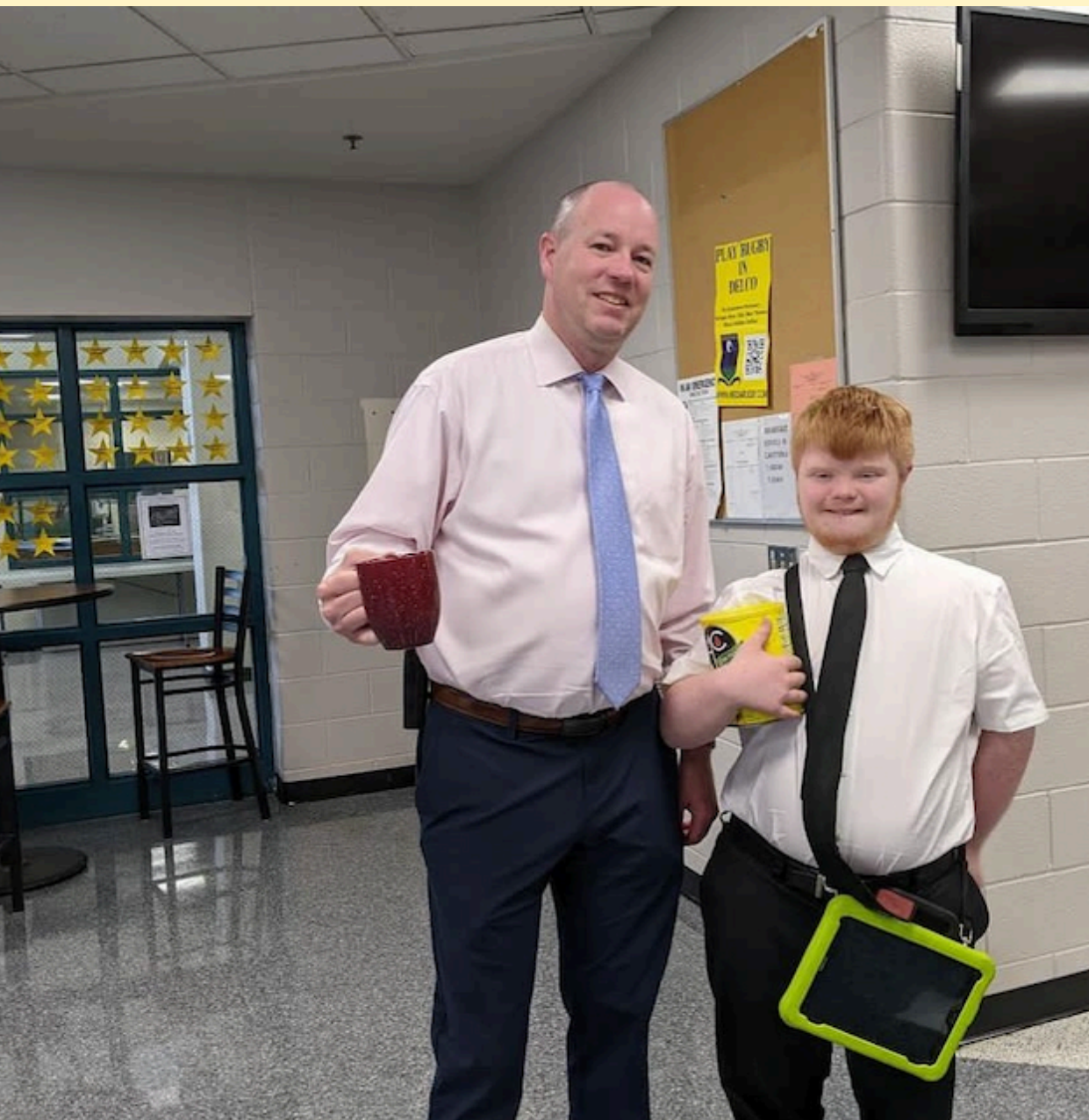


Competitive Employment



Mrs. Lee





Coming Soon 2024-2025



District Wide Coffee Cart

My Reason My Season

Vending Machine Collaboration

Continued Community Flower Business